



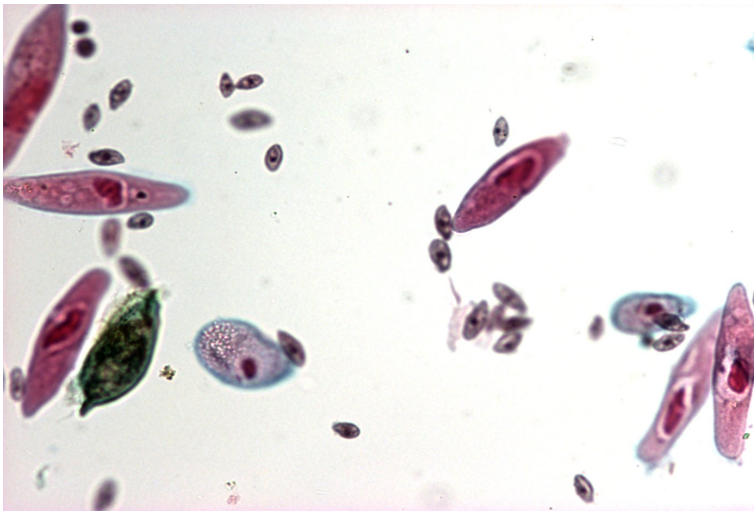
Ecologia de comunidades:

Uma breve introdução



Floresta da Mata Atlântica

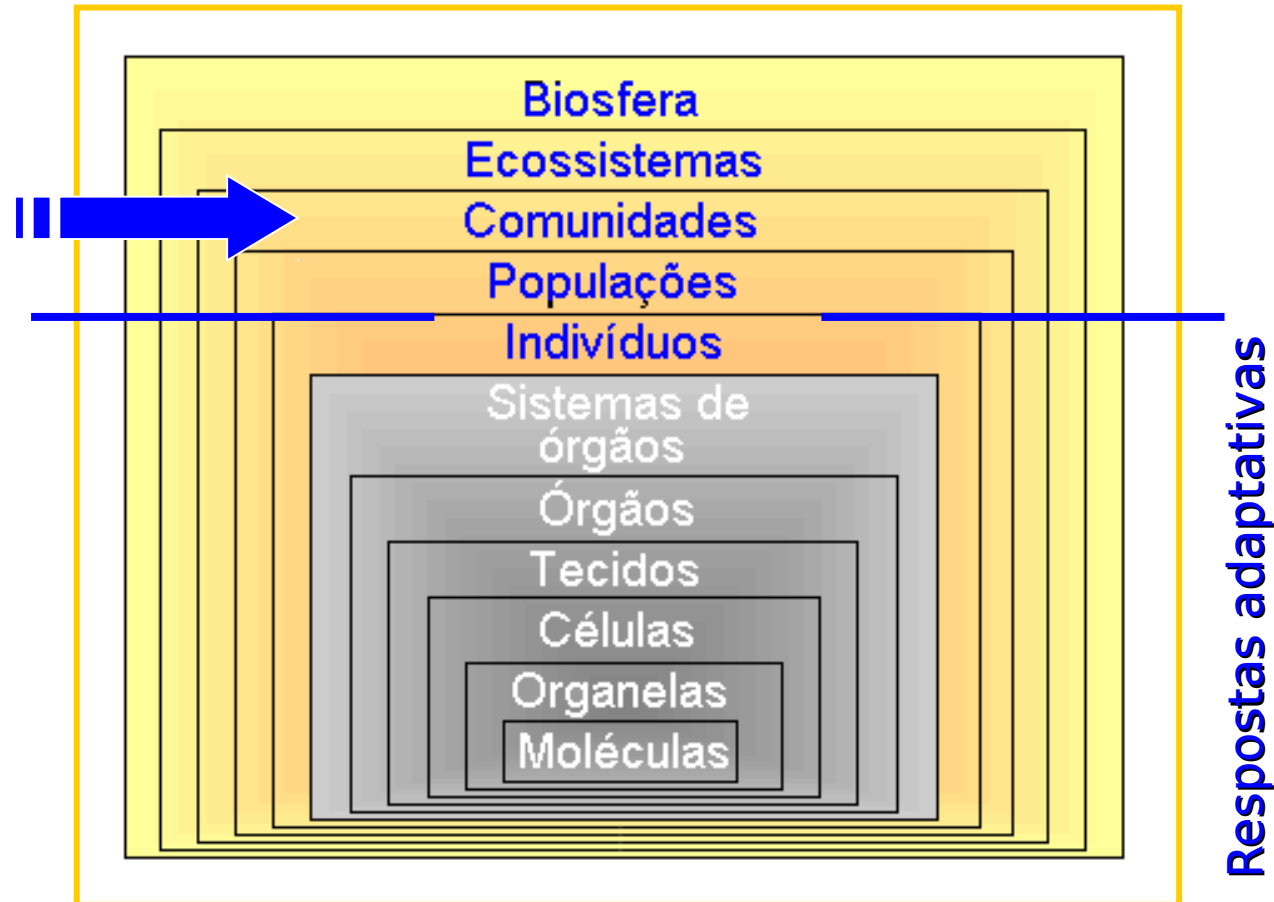
Conjunto de populações de diferentes espécies que ocorrem juntas no espaço e no tempo.



Ciliados em uma gota d'água



Canteiros experimentais



A perguntas essenciais

- Riqueza
 - Por que algumas comunidades têm mais espécies do que outras?
- Composição
 - Por que comunidades têm conjuntos diferentes de espécies?
- Abundância
 - Por que as espécies nas comunidades têm tamanhos populacionais diferentes?

THE AMERICAN NATURALIST

Vol. XCIII

May-June, 1959

No. 870

HOMAGE TO SANTA ROSALIA
or
WHY ARE THERE SO MANY KINDS OF ANIMALS?*

G. E. HUTCHINSON

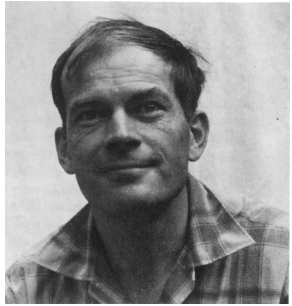
Department of Zoology, Yale University, New Haven, Connecticut



George E.
Hutchinson

1903-1991

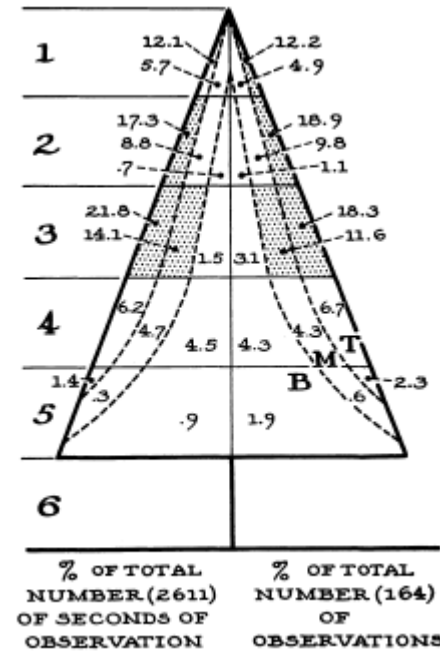
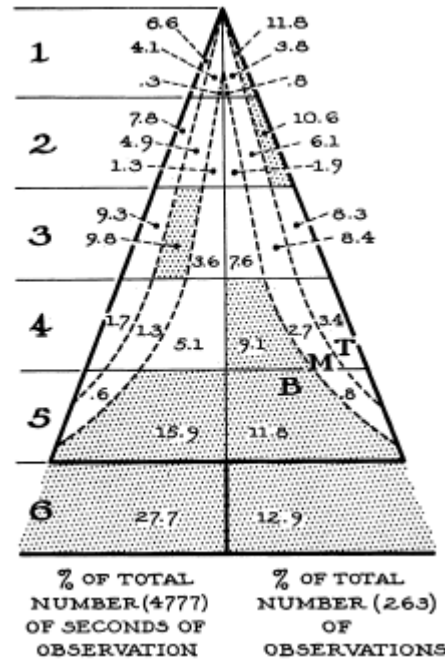




POPULATION ECOLOGY OF SOME WARBLERS OF NORTHEASTERN CONIFEROUS FORESTS¹

ROBERT H. MACARTHUR

Department of Zoology, University of Pennsylvania



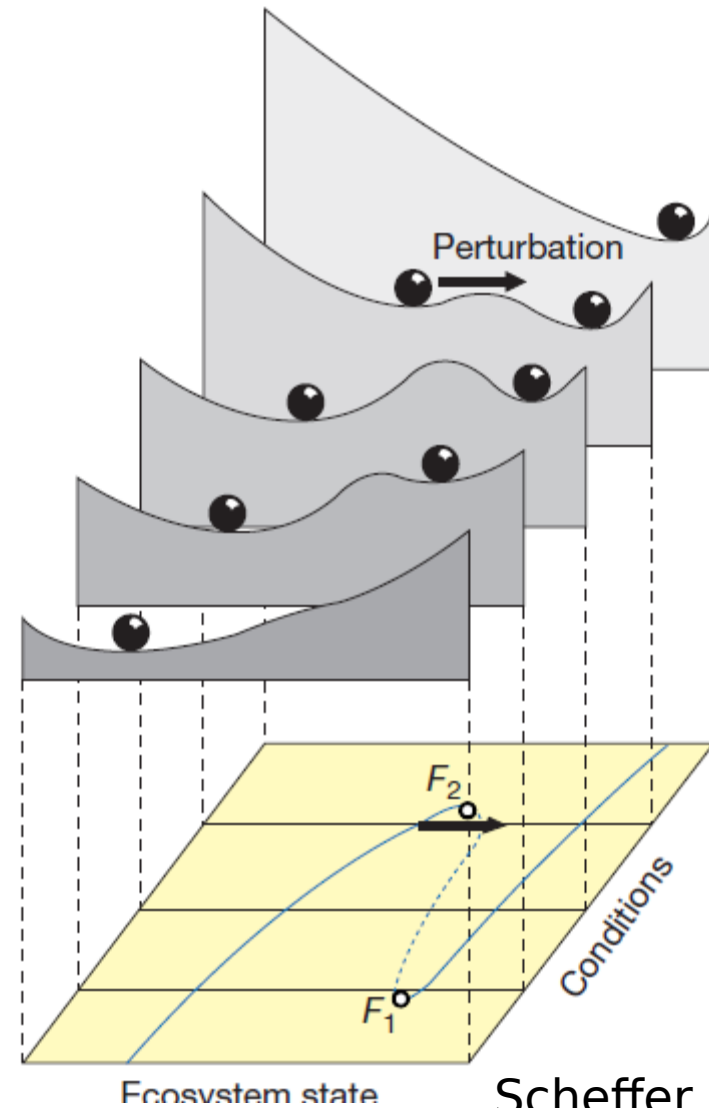
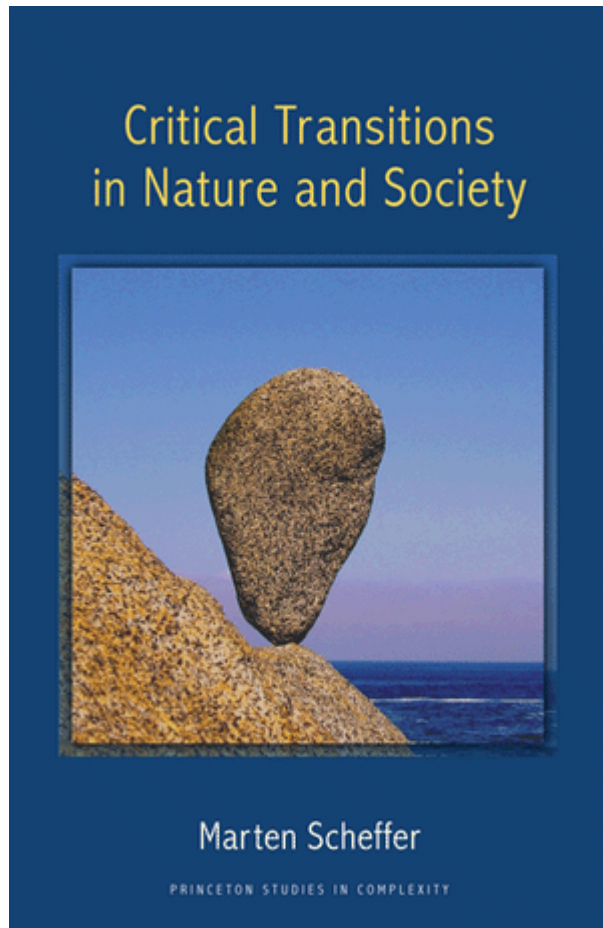
Ecology, Vol. 39, No. 4

October, 1958

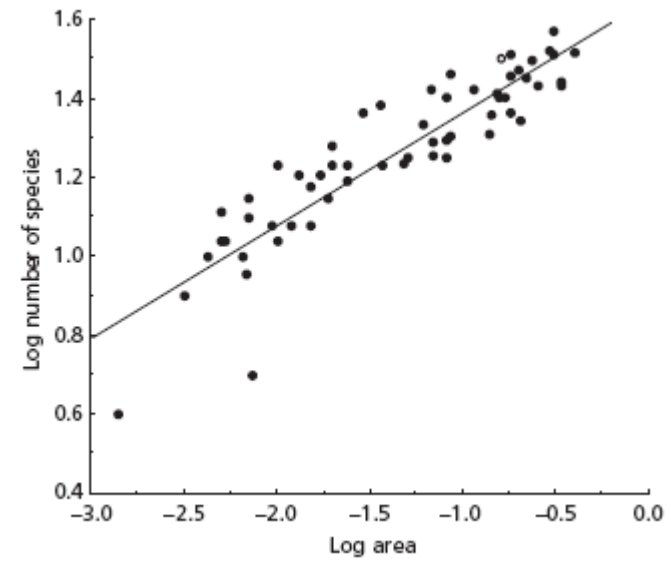
EDOs ou ODEs

$$\frac{dN_1}{dt} = r N_1 \left(1 - \frac{N_1 + \alpha N_2}{K_1} \right)$$


Velocidade



Scheffer et al. 2001



Aves em ilhas britânicas,
Gaston & Blackburn 2000

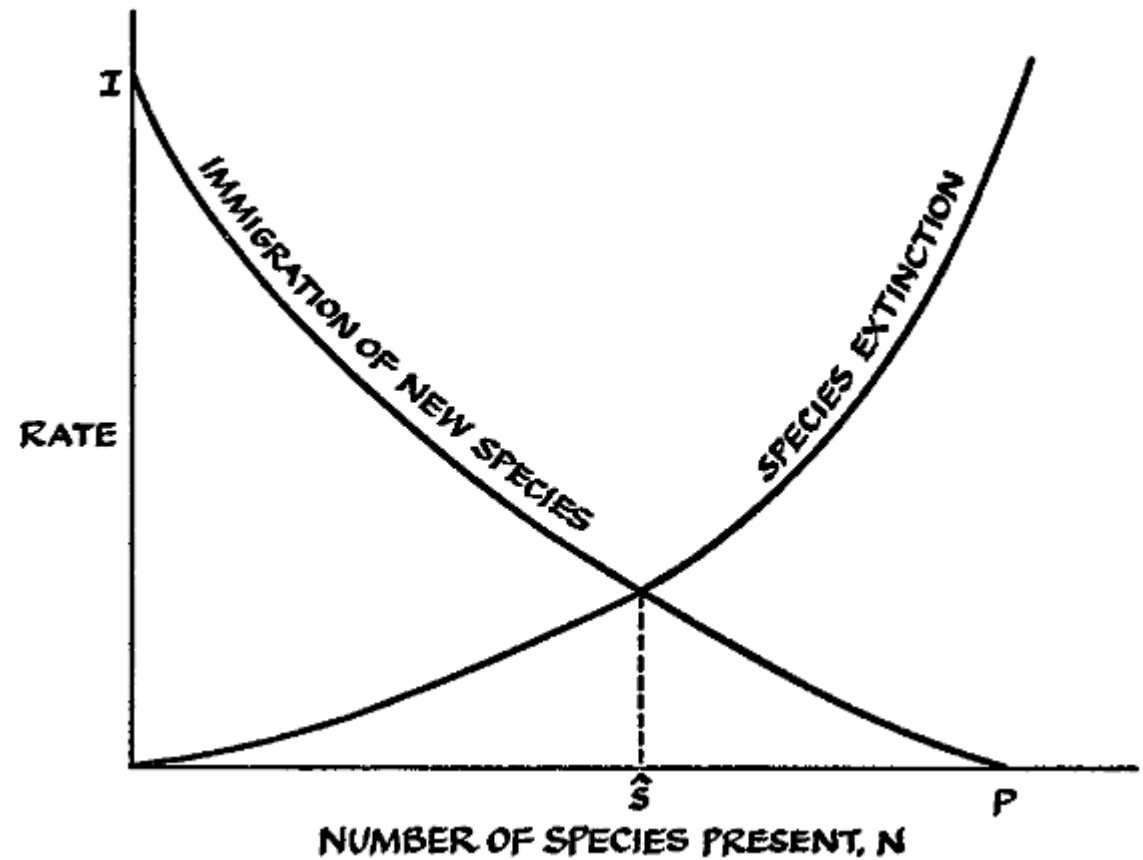
THE THEORY OF Island Biogeography

ROBERT H. MACARTHUR AND

EDWARD O. WILSON

PRINCETON, NEW JERSEY
PRINCETON UNIVERSITY PRESS

1967



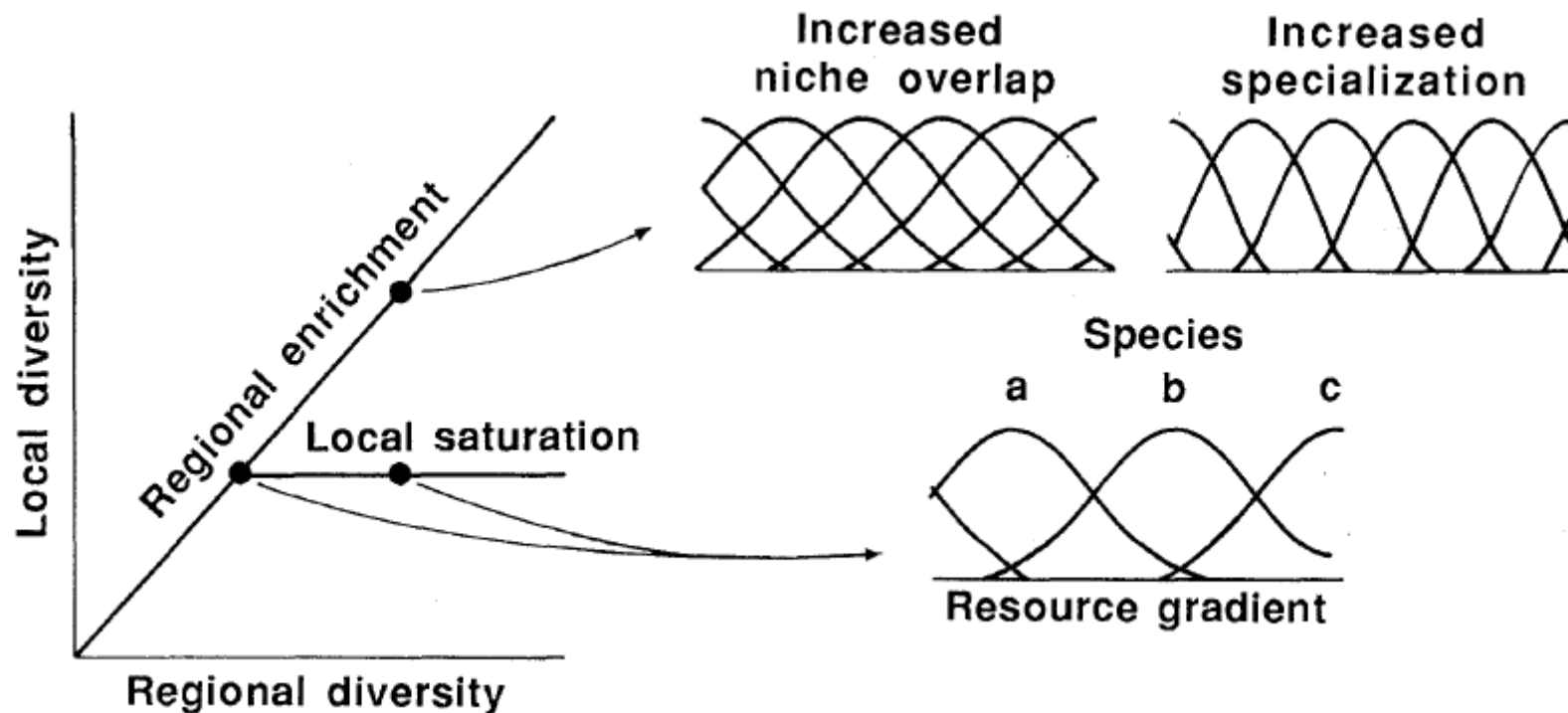


Distribuição geográfica das 12 espécies de árvores que ocorrem em associação no leste do Kentucky



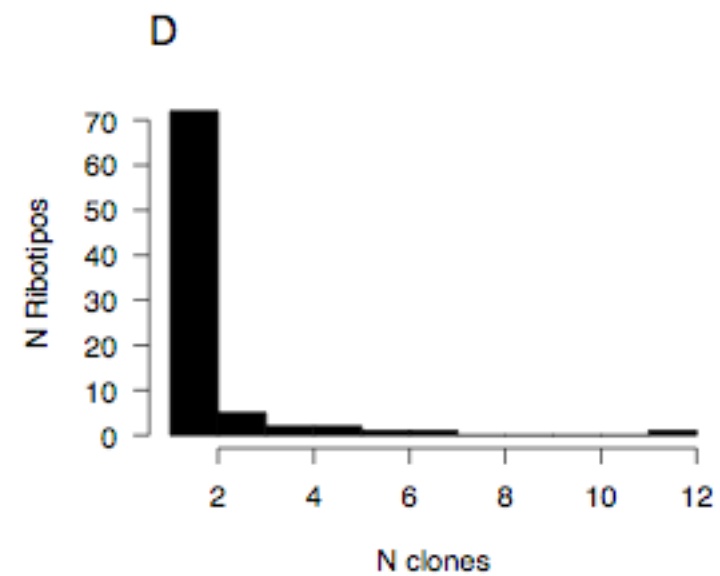
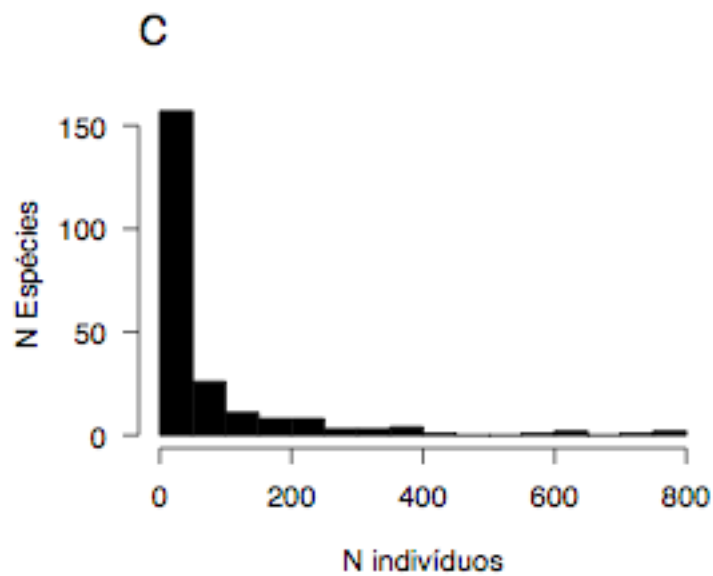
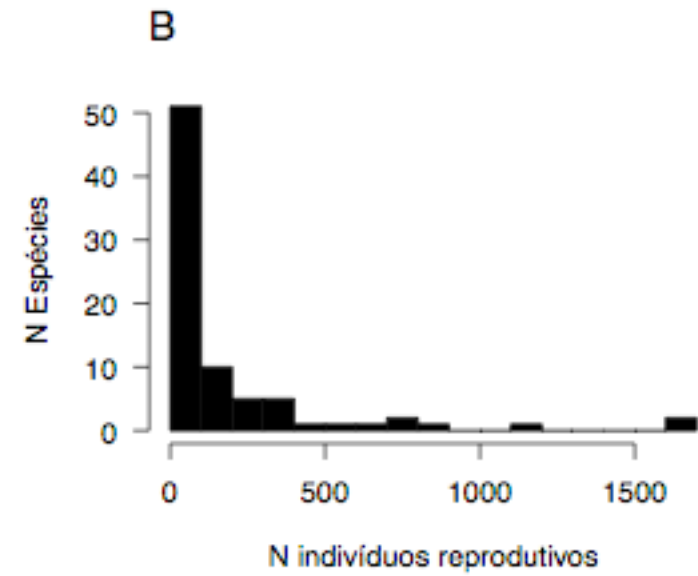
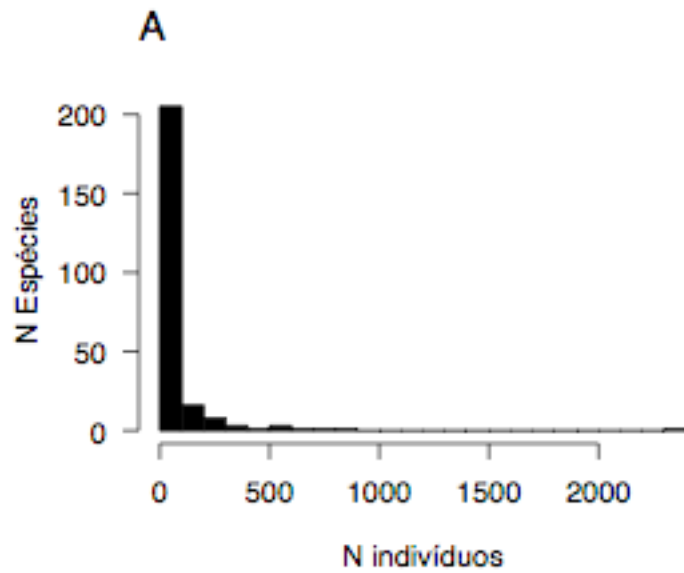
Community Diversity: Relative Roles of Local and Regional Processes

ROBERT E. RICKLEFS



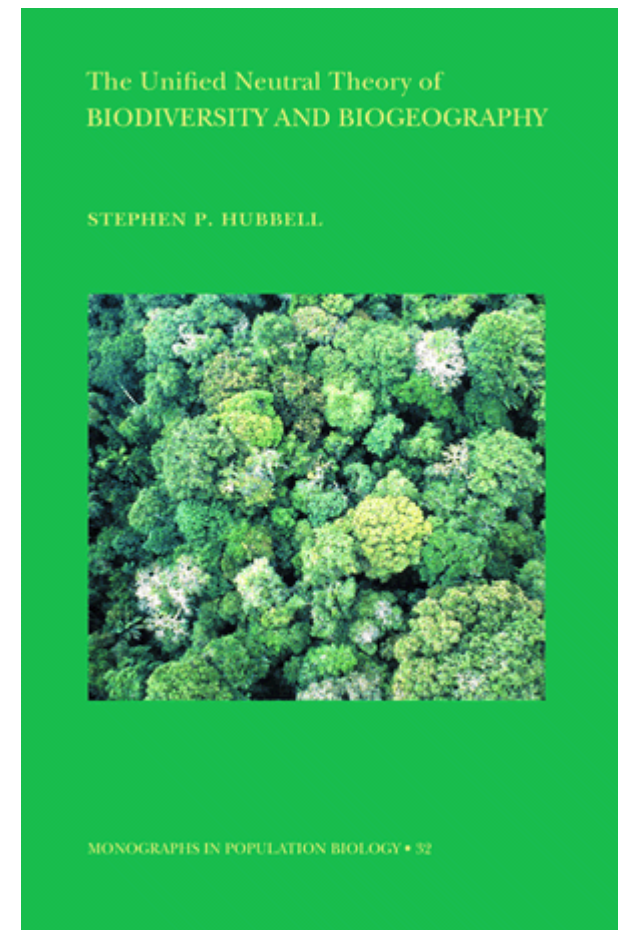
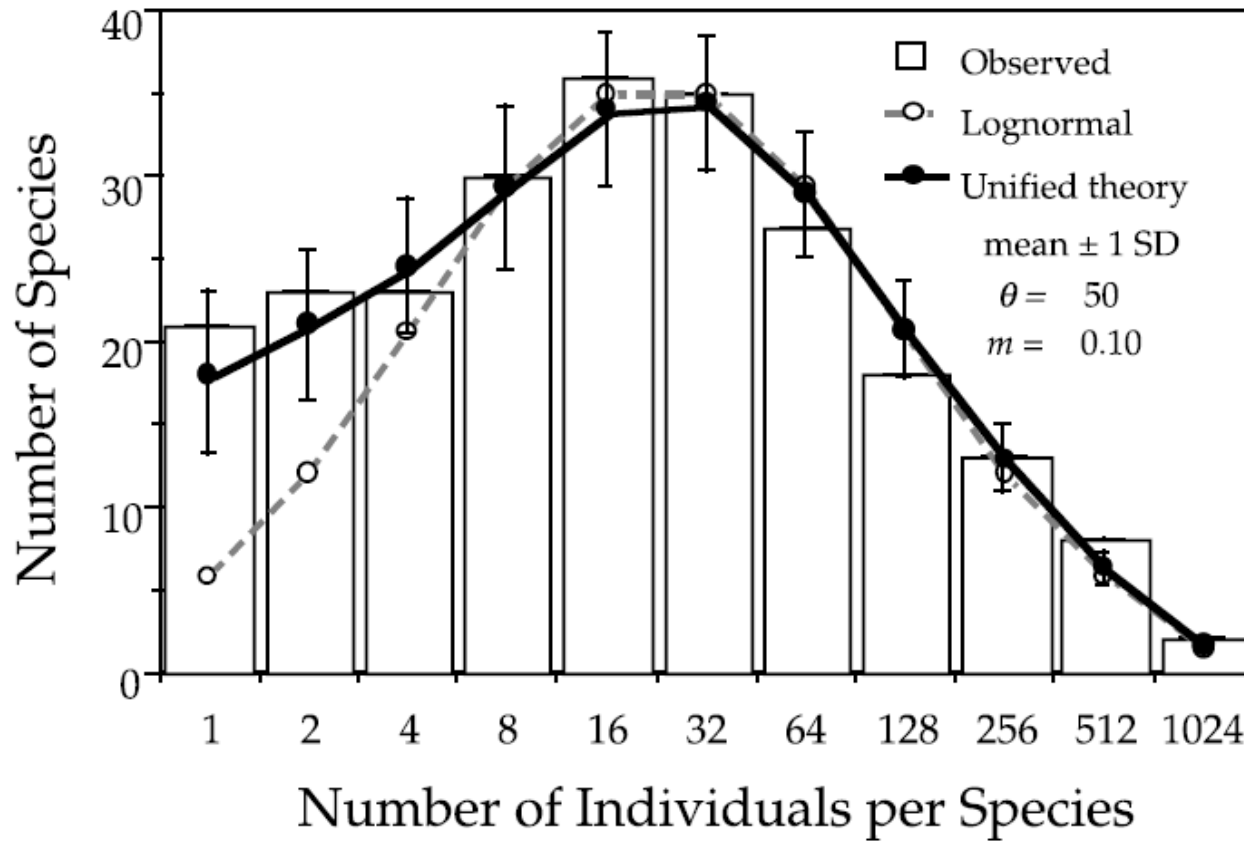
SCIENCE, VOL. 235

9 JANUARY 1987



A - Mariposas, GB
C - Árvores, Panamá

B - Aves, EUA
D - Archaea, BR



Santa Rosalia Was a Goat

ROGER LEWIN

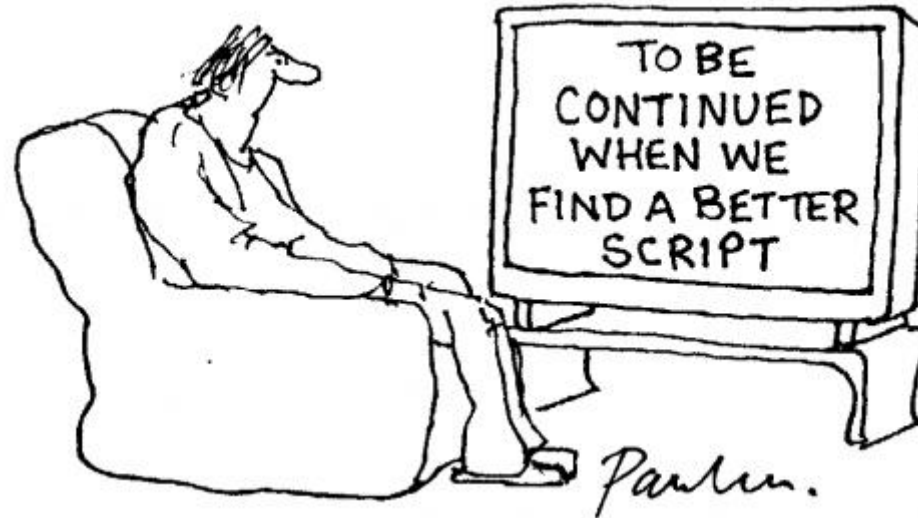
SCIENCE, VOL. 221

12 AUGUST 1983



“[T]he theory has caused
a generation of ecologists
to waste a monumental
amount of time.”

Aqui deveria vir o slide de síntese





CONCEPTUAL SYNTHESIS IN COMMUNITY ECOLOGY

MARK VELLEND

*Departments of Botany and Zoology, and Biodiversity Research Centre, University of British Columbia,
Vancouver, British Columbia, Canada, V6T 1Z4*

